

Interstate 5 – Port of Tacoma Road Interchange Improvement Project

Project Description

This project will provide road, intersection, and interchange improvements of great value to the Port of Tacoma, the surrounding industrial area and businesses in the Cities of Fife and Tacoma. The project is a multi-phased plan to improve the Port of Tacoma Road/Interstate 5 interchange, Pacific Highway East and the Port of Tacoma Road.

The project has been developed in phases for more than a decade, with past work on surface streets and a wetland mitigation site complete and phase 1 construction nearly complete.

Phase 2A of the project will construct the new bridge, and northbound ramps, to reconfigure the existing interchange to a split diamond with one-way couplet. Port of Tacoma Road will be converted to one-way southbound traffic while 34th Ave on the new bridge over I-5 will be one-way northbound. Phase 2B will widen 20th St and install traffic signals at key intersections.

Recent Developments

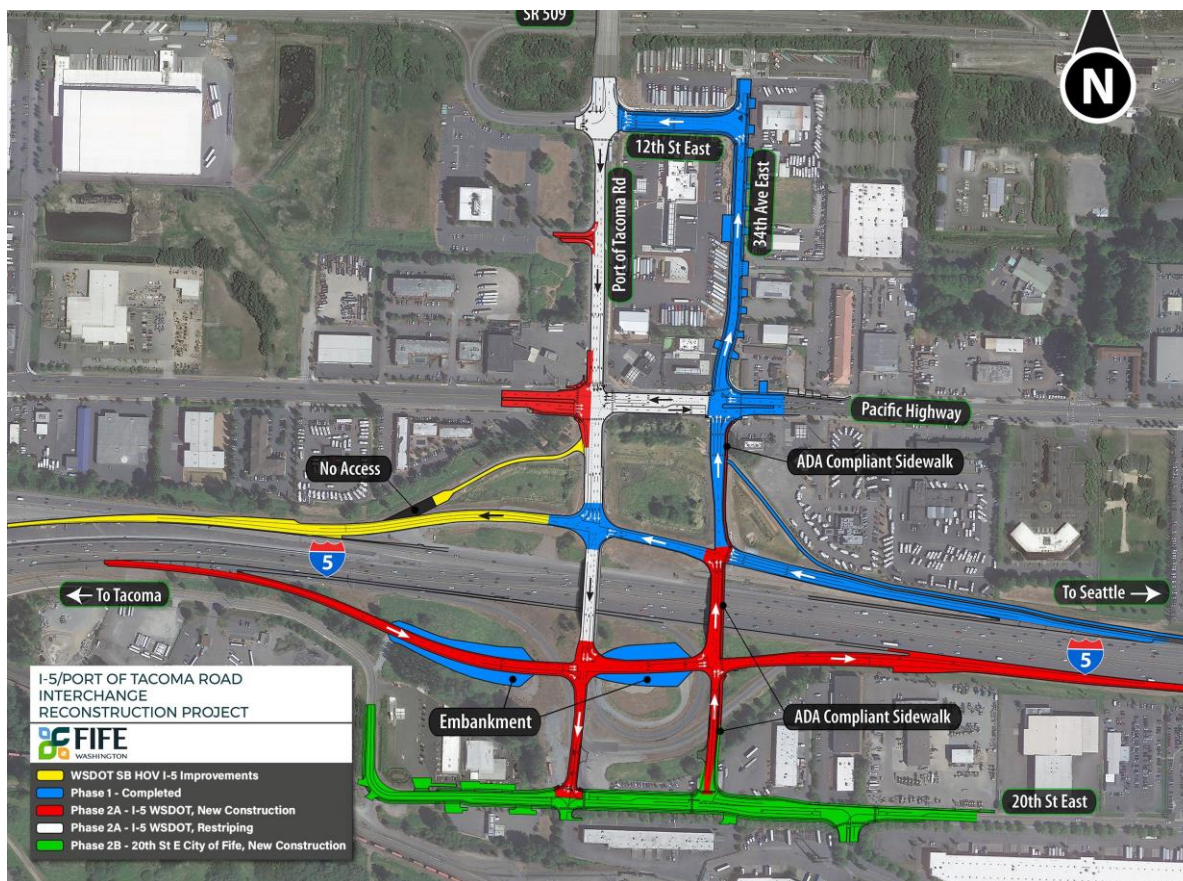
Phase 1 construction was completed in November 2020. Phase 2 design work is under contract and both design and right-of-way acquisition are underway. The remaining funding needed to construct Phase 2 is being sought. Phase 2a construction is slated for 2023.

Project Justification

The Port of Tacoma indirectly accounts for more than 43,000 jobs and generates \$637 million in annual wages in Pierce County. Design, Value Engineering and Traffic Modeling studies have confirmed the need for the improvements and identified an alternative configuration for the interchange and the I-5/ POT Road ramps. The interchange reconstruction will improve level of service for trucks traveling to and from the Port of Tacoma.

The project will improve the operation of the I-5 mainline and all streets and intersections in the project vicinity. Traffic analysis indicates that the entire area would be in gridlock conditions in 2040 if anticipated growth occurred without project construction. With project construction, every intersection in the project vicinity will operate at a level of service “D” or better and queue lengths will be reduced from thousands of feet to hundreds.

Proposed construction of the SR 167 freeway extension will substantially improve access to the east portion of the Port of Tacoma, but this project is still necessary in order to provide access to the west portion of the Port.



Phase 1 Funds

City of Fife	\$12.1 M
Port of Tacoma	\$1.5 M
WA Department of Ecology	\$0.3 M
Federal Highway Administration/PSRC	\$11.1 M
Federal Highway Admin./SAFETEA -LU	\$0.7 M
Freight Mobility Strategic Investment Board	\$8.7 M
Transportation Improvement Board	\$7.6 M
Connecting WA (2015 Legislation)	\$2.6 M
Total Phase 1	\$44.6 M

Phase 2A and 2B Funds

City of Fife	\$8.4 M
FMSIB	\$7.5 M
Connecting Washington – 2015 Legislation	\$19.7 M
Murray/PSRC/TIB/Port (Anticipated)	\$6.0 M
Move Ahead Washington – 2022 Legislation	\$35.0 M
Total-Phase 2	\$76.6 M

SUMMARY OF BENEFITS

- Improves Access to Port of Tacoma
- Improves Safety
- Improves I-5 Main Line Operation

Partners

